



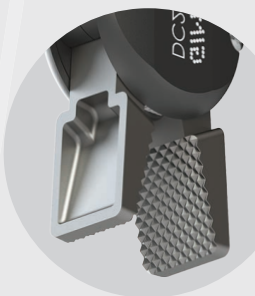
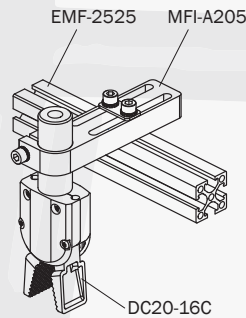
ULTRALIGHT AND POWERFUL SPRUE GRIPPER DC



OPTIONAL SENSORS



SEVERAL MOUNTING ACCESSORIES



STEEL JAWS



	DC20-16R
Stroke	2 x 15°
Total closing torque at 6 bar	600 Ncm
Cycle air consumption	3.6 cm ³
Closing time	0.02 s
Weight	155 g

- Single acting with spring opening
- Several mounting accessories
- Steel jaws
- Plastic-steel-aluminium composite body
- Optional sensors and clamp

