



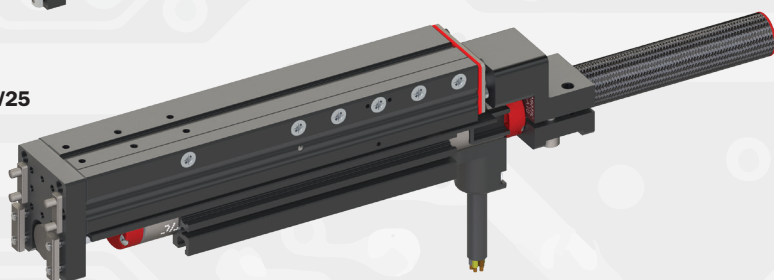
LV - ELECTRIC LINEAR ACTUATORS REVERSE CABLE OUTPUT OPTION

**REVERSE
CONFIGURATION**

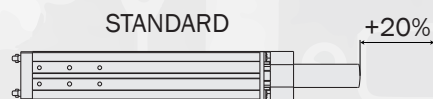
REVERSE
LV40



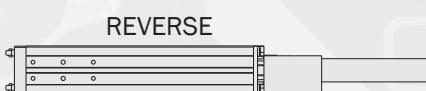
LV25



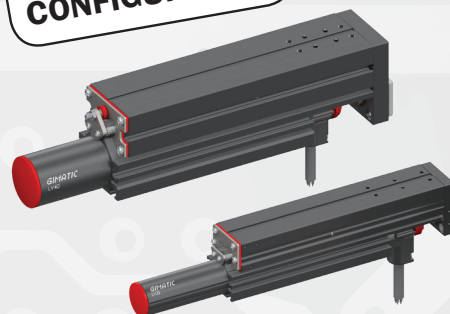
STANDARD



REVERSE



**STANDARD
CONFIGURATION**



New design for the two sizes of linear motorized actuators with recirculated ball bearing system and FDA approved grease. Even more flexible and suitable.

Fully compatible with several common drivers for traditional brushless motors.

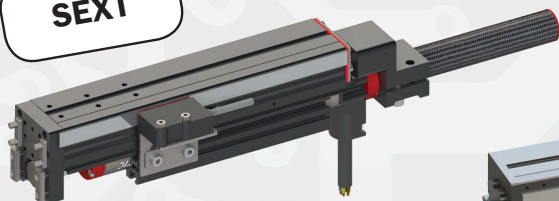
High continuous force up to 400N, 2 m/s top speed, up to 1000mm stroke and up to 0,5µm resolution by High-resolution external encoder.

An easy and useful dimensioning tool is available to simplify your selection by your application target.

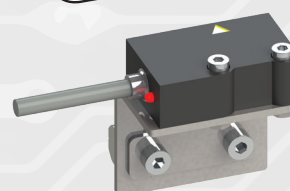
	LV
Size	Ø25 mm - Ø40 mm
Resolution	± 25 µm
Stroke	50 mm - 200 mm
Peak force	100 N - 440 N
Weight	1170 g - 4865 g

External position transducer for linear motors

SEXT



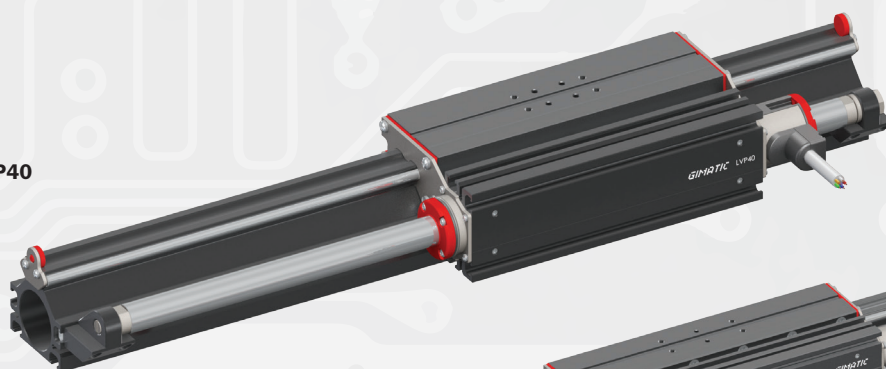
**NEW SINCOs
OUTPUT ± 15 µm**





LVP ELECTRIC LINEAR GUIDES

LVP40



LVP25



New design for the two sizes of linear motorized actuators with recirculated ball bearing system and FDA approved grease. Even more flexible and suitable.

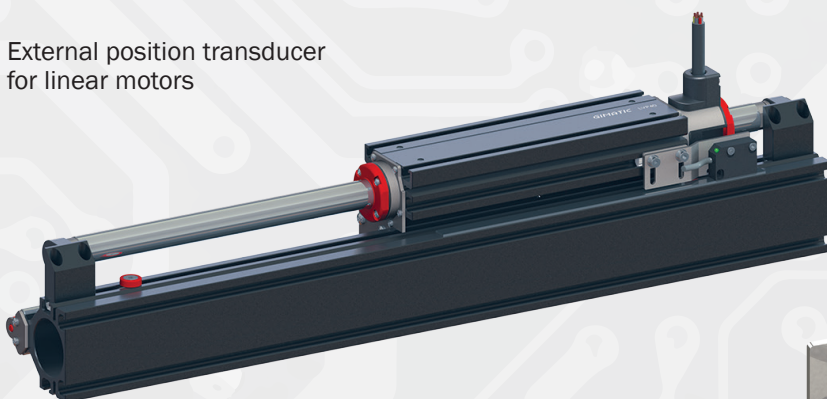
Fully compatible with several common drivers for traditional brushless motors.

High continuous force up to 400N, 2 m/s top speed, up to 1000mm stroke and up to 0,5 μ m resolution by High-resolution external encoder.

An easy and useful dimensioning tool is available to simplify your selection by your application target.

	LVP
Size	Ø25 mm - Ø40 mm
Resolution	$\pm 25 \mu\text{m}$
Stroke	200 mm - 1000 mm
Peak force	110 N - 440 N
Weight	2730 g - 11350 g

External position transducer for linear motors



**NEW SINCOS
OUTPUT $\pm 15 \mu\text{m}$**

