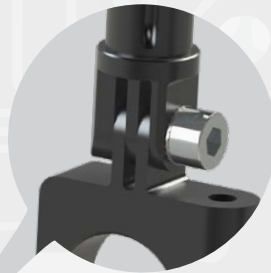




LEVEL COMPENSATORS



VSD



GO-PRO STYLE ANGLE ADJUSTMENT FOR A STIFFER ASSEMBLY

- It is possible to set continuously the angle between 0° and +/-90°.
- External air feeding.
- Body and rod in anodized aluminum.
- Non-rotative rod.
- FDA-H1 food-grade grease.



VSE



VSET

- It is possible to set continuously the angle between 0° and +/-90°.
- External air feeding.
- Body and rod in anodized aluminum.
- Non-rotative rod with high load capability.
- Pressure range: -1 ÷ 8 bar.
- FDA-H1 food-grade grease.

