



## DUST RESISTANT AND HIGH SPEED XP & HS SERIES

30.000.000  
CYCLES



The XP parallel grippers are specially suitable for food grade application in dusty environment thanks to the stainless steel fingers, the Delrin® cap and the FDA grease.

The HS (High Speed) grippers are specially suitable for application where a very fast cycle-time is required on the mechanical cam gear driven high speed machines.

	XP-20	XP-26
Total stroke (± 0.2 mm)	8 mm	13.2 mm
Weight	160 g	300 g

	HS-2012	HS-2518
Total stroke (± 0.3 mm)	8 mm	13.2 mm
Weight	144 g	270 g



XP-20



HS-2012

THE «COFFEE  
GRIPPER»

HIGH SPEED





## SEALED 2 AND 3 JAWS GRIPPERS SX - SXT SERIES

IP67

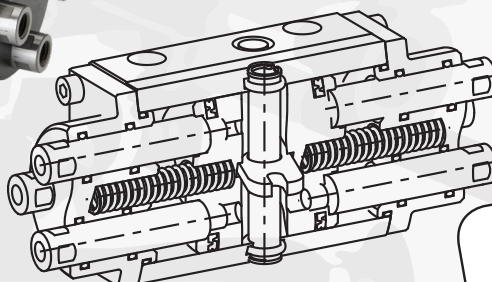


A parallel gripper, specifically designed to provide the better performances in harsh environments, internally sealed to preserve from dust, oil and also one meter underwater with protection class IP67.

These grippers simply have no internal volumes. So there is no risk of aspiration caused by the pump effect of a variable volume.

	SX4020	SX4040	SX5030	SX5060	SX6340	SX6380
Total stroke ( $\pm 0.5$ mm)	20 mm	40 mm	30 mm	60 mm	40 mm	80 mm
Weight	750 g	900 g	1300 g	1700 g	2800 g	3500 g

ADDITIONAL SEALING  
AND STAINLESS  
STEEL INOX PARTS



NO PUMP  
EFFECT

